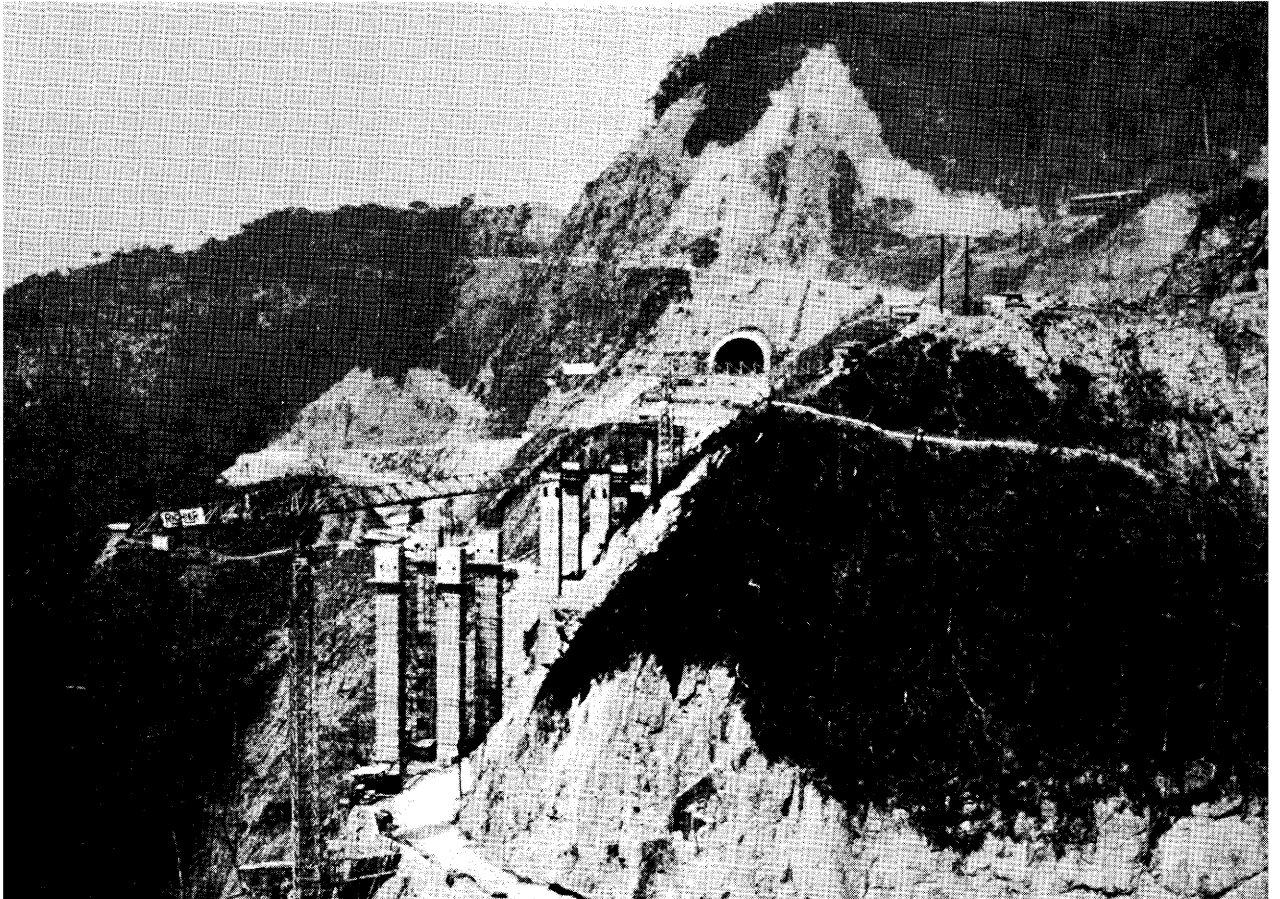


The Quarterly Journal of  
**Engineering  
Geology**

**Volume 8 No 1 1975**



# GEOLOGICAL SOCIETY

<i>President</i>	Sir Peter Kent, D.S.C., F.R.S.
<i>Secretaries</i>	Professor W. W. Bishop, Professor P. McL. D. Duff
<i>Foreign Secretary</i>	Professor W. S. Pitcher, D.S.C., D.I.C., M.I.M.M.
<i>Treasurer</i>	Dr A. J. Smith

## ENGINEERING JOURNAL EDITORIAL SUB-COMMITTEE

*Chairman & Scientific Editor* Professor W. R. Dearman, PH.D., A.R.C.S., F.G.S.  
Dr S. H. U. Bowie, Professor P. McL. D. Duff, Dr P. G. Fookes,  
Mr D. Grant (representing Scottish Academic Press),  
Mr I. A. Higginbottom, Professor E. Hoek, Dr G. P. Jones,  
Mr P. F. F. Lancaster-Jones, Dr A. J. Smith, Dr A. B.  
Hawkins, Dr R. J. Chandler, Dr R. K. Taylor.

## THE QUARTERLY JOURNAL OF ENGINEERING GEOLOGY

The scope of the journal, within the field of engineering geology, is widely drawn. The journal is open to contributions from Fellows and non-Fellows of the Society, in this country and overseas. Papers will be considered which deal with any of the subjects within the field of geology as applied to civil engineering and mining practice, including rock mechanics, soil mechanics and geotechnics; applied sedimentology, pedology, mineralogy and petrology; geohydrology and hydrogeology; and engineering application of geophysics.

Case histories and review articles of a more general character will also be considered, particularly if these are of a timely nature. It will be editorial policy occasionally to group several related papers together in the same issue.

### *Scientific Editor*

Professor W. R. Dearman, PH.D., A.R.C.S., F.G.S.  
Department of Geology  
University of Newcastle-upon-Tyne  
Newcastle-upon-Tyne, NE1 7RU  
*Telephone:* 0632-28511, ext. 3107

### *Assistant Scientific Editors*

Dr R. K. TAYLOR  
Engineering Geology Laboratories  
Science Laboratories  
South Road, Durham City  
*Telephone:* 91-64971

Dr R. J. Chandler  
Department of Civil Engineering  
Imperial College  
London SW7  
*Telephone:* 01-589-5111

© The Geological Society, London 1975

### *Cover Illustration*

The Rodovia dos Imigrantes motorway under construction between Sao Paulo and Santos, Brazil. The photograph is of part of the Serra do Mar section negotiating the coastal escarpment by means of eleven tunnels and twenty viaducts. An unstable superficial zone up to 40 m thick has dictated the choice of shallow tunnels through hill spurs and viaducts, with difficult foundation conditions, across the intervening valleys. (Photo Aug. 1974, W. R. Dearman).

# THE QUARTERLY JOURNAL OF ENGINEERING GEOLOGY

Vol. 8, no. 1

1975

Price £4

*Annual subscription:* £15 (\$40.00 U.S.A.); single numbers all issues £4 (\$10.00 U.S.A.);  
double numbers £8 (\$20.00 U.S.A.).

---

## *Contents*

ROBERT W. FLEMING & ARVID M. JOHNSON: Rates of seasonal creep of silty clay soil . . . . .	1
PETER LUMB: Slope failures in Hong Kong . . . . .	31
THOMAS RICHARD STACEY: The behaviour of two- and three-dimensional model rock slopes . . . . .	67

---

*Published for*

THE GEOLOGICAL SOCIETY  
BURLINGTON HOUSE,  
PICCADILLY, LONDON W1V 0JU

*by*

SCOTTISH ACADEMIC PRESS LTD  
25 PERTH STREET,  
EDINBURGH, EH3 5DW

*and printed by*

THE UNIVERSITIES PRESS  
ALANBROOKE ROAD, BELFAST BT6 9HF, NORTHERN IRELAND